

Where is the OLISS workbench and what is its function (document)

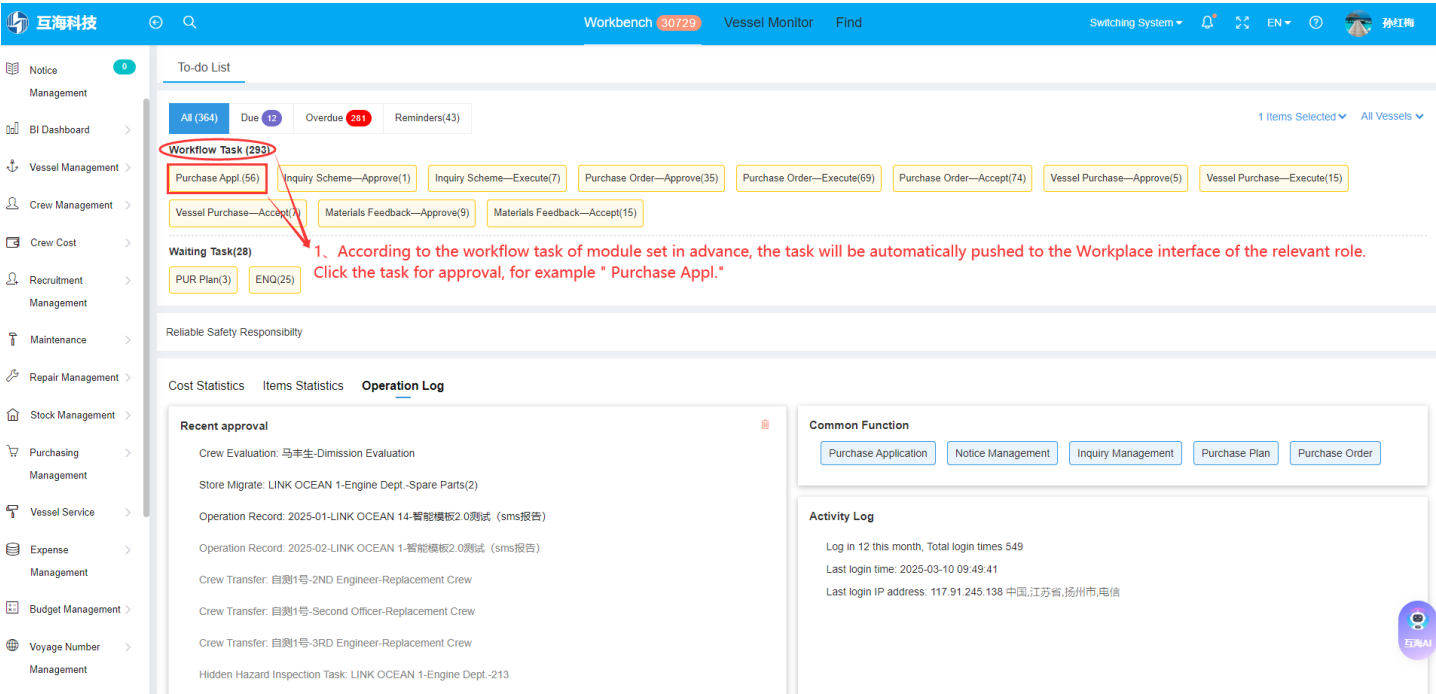
After the users log in to the OLISS Web side, the defaults enter the workbench interface. The workbench interface includes **To-do List** , **cost statistics** , **item statistics** and **operation log**, **OLISS AI assistant** function.

1. To-do List

To-do List includes Workflow Task and Waiting Task.

1.1 Workflow Task

According to the workflow task of each module set in advance, the task will be automatically pushed to the Workplace interface of the relevant role. Click the task for approval, for example, "Purchase Appl.", please refer to the following figure:



← Purchase Appl.

2. Click on the target document to review and approve

No.	Appl Name/No.	Vessel	Dept.	Item Type	Appl.Date	Purchase Content	Supply Date	Supply Place	Purchase Modes	Priority Level
3	OL1-PA-P24120201	LINK OCEAN 1	Engine Dept.	Spare Parts	2024-12-02	Type / Property: Spare Parts / Monthly Purchase Number of Items Purchased: 3 Equipment: 泵	2025-01-02	互江	Ashore Inquiry	Normal
4	11月申请单 ①	LINK OCEAN 1	Engine Dept.	Spare Parts	2024-11-26	Type / Property: Spare Parts / Monthly Purchase Number of Items Purchased: 2 Equipment: 柴油机	2024-11-29	扬州港	Ashore Inquiry	Normal

1.2 Waiting Task

According to the pre-set processing flow of each module, the task will be automatically pushed to the workbench interface. Click on the task to perform the corresponding processing, such as "Crew Track", which can refer to the following figure.

Workbench 30736 Vessel Monitor Find

Switching System EN 孙红梅

To-do List

When there are many tasks on the workbench, click the "All Modules" or "All Vessels" drop-down keys to select specific vessels and modules to quickly find the target task

1 Items Selected All Vessels

Workflow Task (404)

Disembark Request—Approve(6) Disembark Request—Execute(3) Crew Transfer—Approve(5) Crew Transfer—Execute(1) Crew Transfer—Accept(2) Crew Evaluation(387)

Waiting Task(133)

Crew Cert.-Lack(14) Crew Cert.-No Attachment(118) Crew Track(1) → 1、Click "Crew Track"

Reliable Safety Responsibility

According to the processing flow of each module set , tasks will be automatically pushed to the workbench interface, such as "Crew Certificate", "Crew Tracks" and other tasks below

Cost Statistics Items Statistics Operation Log

Purchase Cost ① 2025-02 ~ 2025-02 Details

Stock-out Cost ① 2025-02 ~ 2025-02 Details

Value of Current Stocks ① Details

← Crew dynamic advent

Keywords Searching Default Sort Search Reset

No.	Name	Age	Vessel	Crew Group	Crew Status	Cert. Rank	Latest Work ...	Latest Recor...	Recorder/Date	Evaluation R...	Contact Methods	Warning	Operation
1	陈*	41	LINK OCEAN 1	自有船员组34	On Board	Chief Officer	LINK OCEAN 1/Chief Officer (172 Days On Board)	待派,		N/A		2025-03-17 需要跟踪	Treat

2、Click "Treat" on the right side of the target documentation

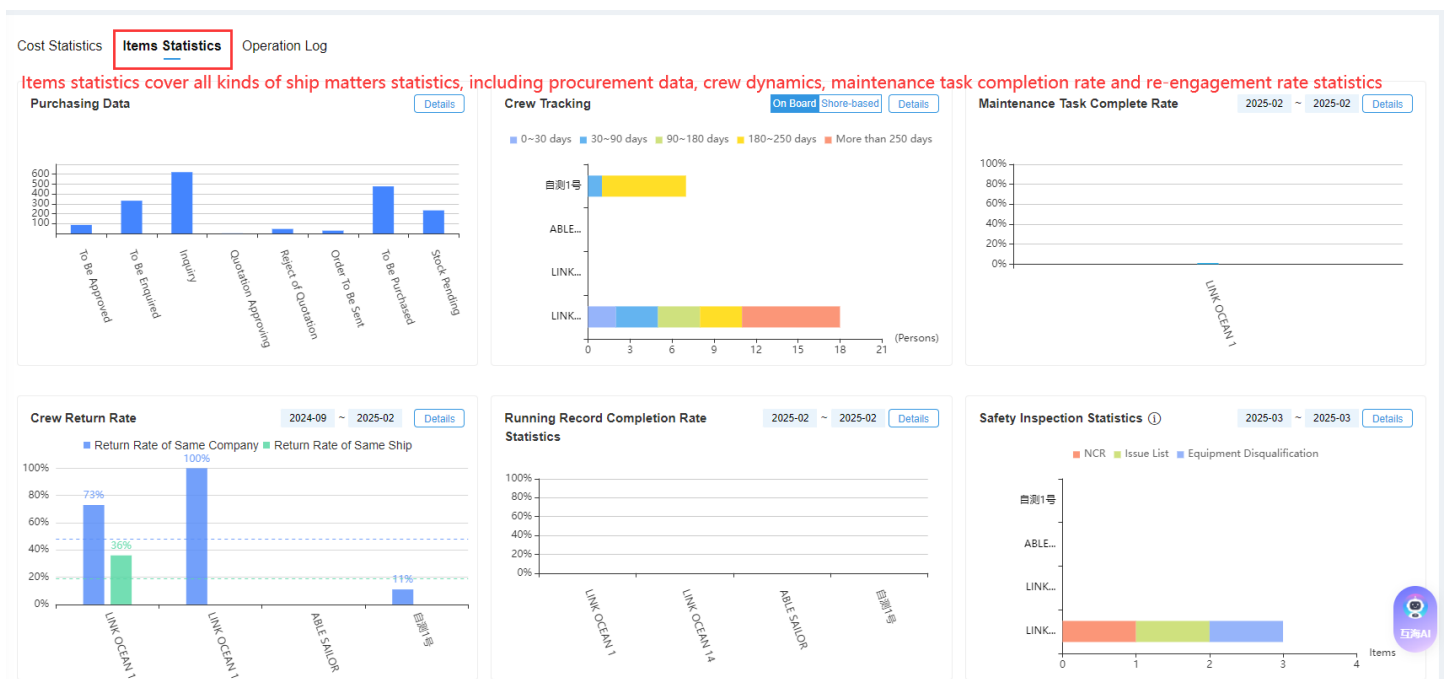
2. Cost statistics

Cost statistics cover various types of ship cost statistics, including labor reimbursement, procurement cost, outbound cost, crew cost, etc. When selecting a specific statistical chart, you can view the chart details data.



3. Items statistics

Items statistics cover all kinds of ship matters statistics, including procurement data, crew dynamics, maintenance task completion rate and re-engagement rate statistics. When selecting a specific statistical chart, you can view the chart details data.



4, operation log

Operation log includes the latest approval, frequently used functions and activity logs, which helps users view the latest approval documentation and login status, and use the system conveniently.

Workbench 30736 Vessel Monitor Find Switching System EN 孙红梅

To-do List

All (179) Due 1 Overdue 135 Reminders(43) 1 Items Selected All Vessels

Workflow Task (2)

Hidden Hazard Inspection Task—Execute(1) Hidden Hazard Inspection Task—Accept(1)

Waiting Task(134)

Ves. Cert. (97) Ves. Cert.-No Attachment(3) CO. Cert. (1) CO. Cert. (3) Cyc. Inspect(30)

Reliable Safety Responsibility

Cost Statistics Items Statistics **Operation Log**

Operation log includes the latest approval, frequently used functions and activity logs, which helps users view the latest approval documentation and login status, and use the system conveniently

Recent approval

Crew Evaluation: 马丰生-Dimission Evaluation

Store Migrate: LINK OCEAN 1-Engine Dept.-Spare Parts(2)

Operation Record: 2025-01-LINK OCEAN 14-智能模板2.0测试 (sms报告)

Operation Record: 2025-02-LINK OCEAN 1-智能模板2.0测试 (sms报告)

Crew Transfer: 自测1号-2ND Engineer-Replacement Crew

Crew Transfer: 自测1号-Second Officer-Replacement Crew

Crew Transfer: 自测1号-3RD Engineer-Replacement Crew

Hidden Hazard Inspection Task: LINK OCEAN 1-Engine Dept.-213

Hidden Hazard Inspection Task: LINK OCEAN 1-Engine Dept.-123123

Common Function

Purchase Application Notice Management Inquiry Management Purchase Plan Purchase Order

Activity Log

Log in 12 this month, Total login times 549

Last login time: 2025-03-10 09:49:41

Last login IP address: 117.91.245.138 中国,江苏省,扬州市,电信

互海AI

5. OLISS AI Assistant: Can provide queries on maritime regulations and industry knowledge, as well as system operation guide help documents.

To-do List

All (179) Due 1 Overdue 135 Reminders(43) 1 Items Selected All Vessels

Workflow Task (2)

Hidden Hazard Inspection Task—Execute(1) Hidden Hazard Inspection Task—Accept(1)

Waiting Task(134)

Ves. Cert. (97) Ves. Cert.-No Attachment(3) CO. Cert. (1) CO. Cert. (3) Cyc. Inspect(30)

Reliable Safety Responsibility

Cost Statistics Items Statistics **Operation Log**

Recent approval

Crew Evaluation: 马丰生-Dimission Evaluation

Store Migrate: LINK OCEAN 1-Engine Dept.-Spare Parts(2)

Operation Record: 2025-01-LINK OCEAN 14-智能模板2.0测试 (sms报告)

Operation Record: 2025-02-LINK OCEAN 1-智能模板2.0测试 (sms报告)

Crew Transfer: 自测1号-2ND Engineer-Replacement Crew

Crew Transfer: 自测1号-Second Officer-Replacement Crew

Crew Transfer: 自测1号-3RD Engineer-Replacement Crew

Hidden Hazard Inspection Task: LINK OCEAN 1-Engine Dept.-213

Hidden Hazard Inspection Task: LINK OCEAN 1-Engine Dept.-123123

Common Function

Purchase Application Notice Management

Activity Log

Log in 12 this month, Total login times 549

Last login time: 2025-03-10 09:49:41

Last login IP address: 117.91.245.138 中国,江苏省,扬州市,电信

互海AI助手 (支持来自飞书Ailyy-deepseek模型)

你好,我是“互海AI助手”
我可以随时为你提供帮助。

你可以这样问 C 换一批

中华人民共和国噪声污染防治法包含什么?

MARPOL 国际防止船舶造成污染公约2023?

修改年度保养计划?

新问题

发送消息

内容由AI生成,仅供参考,请遵守《互海AI助手声明》

互海AI

Can provide queries on maritime regulations and industry knowledge, as well as system operation guide help documents